



# THE LEADERS LYCEUM

LEARN TO LEAD

Play Group To Matric / O-level



# WELCOME MESSAGE FROM THE CHAIRMAN



At **TLL**, we take great pride in fostering innovation, independent thinking, and character development, guiding our students towards success. We encourage them to think creatively, explore new ideas, and emerge as future leaders and entrepreneurs.

Our High School offers a rigorous curriculum that prepares students for their academic and personal journeys beyond **TLL**. We strive to challenge and motivate our students through a diverse range of courses, equipping them with the skills and knowledge necessary for their future endeavors.

In the Elementary Division, we take a student-centered approach, ensuring that every learner receives personalized attention and support. We believe in nurturing curiosity, fostering creativity, and instilling a lifelong love for learning and entrepreneurship. Our dedicated faculty provides a solid foundation, preparing students for the opportunities and challenges ahead.

The Middle School at **TLL** serves as a vital bridge between the Elementary Division and High School. Here, we focus on developing critical thinking skills, fostering teamwork, and nurturing personal growth. Our comprehensive curriculum empowers students to explore their interests and build a strong academic foundation.

With our highly qualified faculty, state-of-the-art facilities, and a nurturing learning environment, **TLL** creates a vibrant and dynamic space where students can thrive and achieve their full potential. We wholeheartedly embrace our responsibility to shape the next generation of leaders in our great nation.

I warmly invite you to visit us and witness firsthand the transformative educational experience that The Leaders Lyceum offers. Together, let us embark on an exciting journey of growth, discovery, and endless possibilities.

Warm regards,  
**Muhammad Younus**  
Chairman, THE LEADERS LYCEUM

# WELCOME MESSAGE FROM THE HR DIRECTOR



I'm delighted to have the chance to introduce you to The Leaders Lyceum. As the Project Director, it's my pleasure to welcome you and show you what makes our school an extraordinary place for learning and growing.

When we talk about education at The Leaders Lyceum, we're not just talking about books and classrooms. We're talking about a journey of discovery, sparking a love for learning that lasts a lifetime, and giving our students the tools, they need to thrive in our ever-changing world. Our dedicated teachers and staff are all about creating an environment where curiosity is encouraged, creativity is celebrated, and values are built.

Our 4-H approach is all about nurturing the heart, mind, hands, and health of our students. Our classes are designed to challenge young minds while our hands-on experiences and community engagement teach them to make a difference in the world. We're all about fostering critical thinking, lifelong learning, innovation, invention and self-expression.

Our school is more than just a place to study. It's a place where leadership is nurtured. Our diverse range of subjects and extracurricular activities create an environment that shapes leaders who make a positive impact. When it comes to facilities, we've got you covered. From modern classrooms to labs and sports spaces, we've set the stage for academic, social, and physical growth.

We're not afraid of technology – we embrace it. Our approach is all about teaching kids how to use technology in creative, responsible ways.

Take a closer look at our prospectus to learn more about what we offer – from academic programs and entrepreneurship initiatives to our focus on leadership, school facilities, and how we integrate technology into learning. If you have questions or want to experience our campus firsthand, our admissions team is here to help.

Choosing the right school is a big decision, and we're honored that The Leaders Lyceum is on your radar. We're excited about the possibility of joining you and your child on this educational journey, helping them achieve their best – both in success and happiness.

Thank you for considering The Leaders Lyceum. We're looking forward to getting to know you better and hopefully welcoming you into the Leaders Lyceum family.

**Mrs Aisha Younus**

# Our Beliefs

At TLL, we believe that:

Education is  
our foremost  
priority.

Knowledge  
empowers  
us.

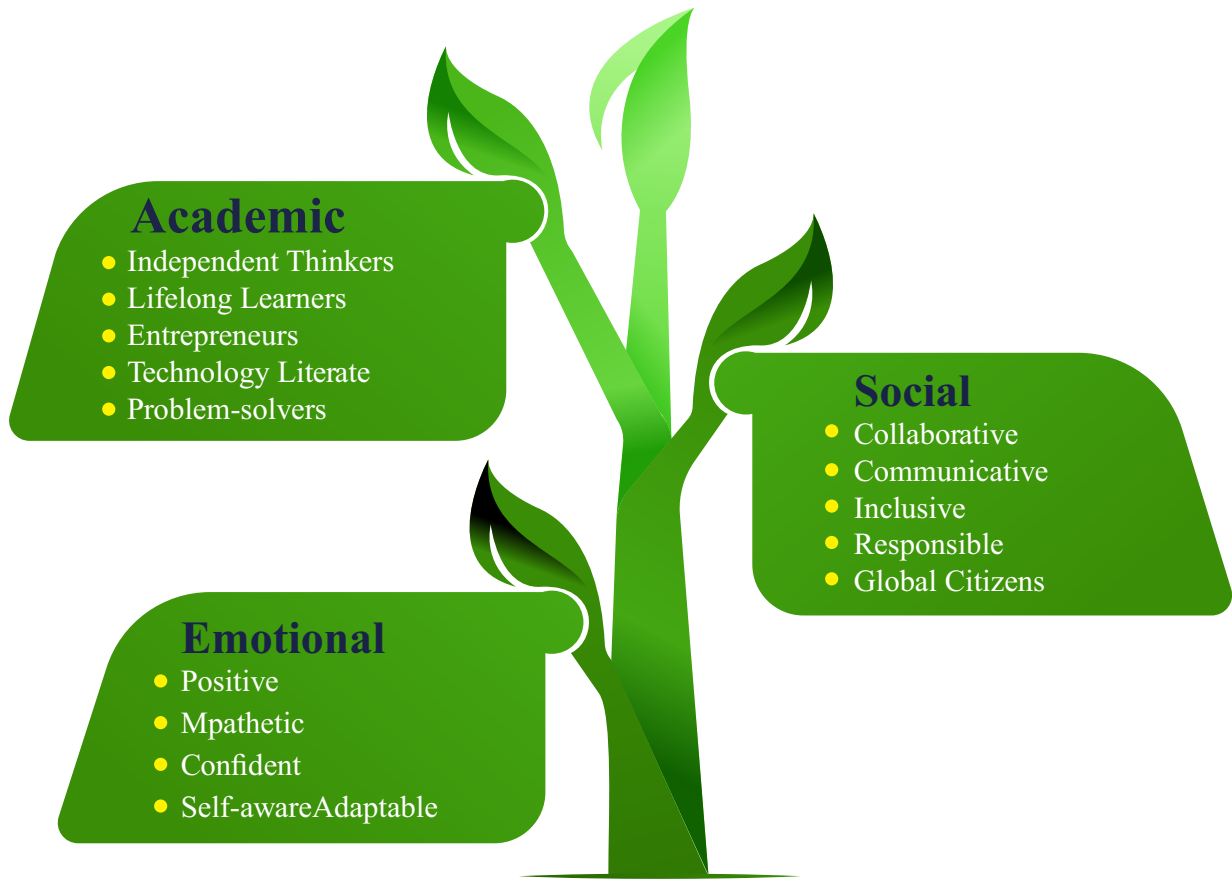
Entrepreneuring  
is the art of  
learning.

Every  
individual is  
unique and  
learning takes  
various forms.

We all have  
a responsibility to  
contribute positively  
to global society.



# What type of graduates do we produce?



## Academic

<p><b>Independent Thinkers</b>  <i>...strong critical thinkers able to navigate complexity, solve problems, and make rational, creative, and ethical decisions.</i></p>	<p><b>Lifelong Learners</b>  <i>...inquisitive individuals who embrace the world with wonder and recognizing that learning is a lifelong journey. They eagerly share their knowledge and discoveries with others, fostering a spirit of knowledge exchange and collaboration.</i></p>	<p><b>Entrepreneurs</b>  <i>...innovative trailblazers who are not afraid to venture into uncharted territories. Fueled by a passion for change and improvement, they constantly seek new opportunities and possibilities. Their ambition and drive inspire others to take initiative and explore their entrepreneurial spirits, fostering a culture of creativity and success.</i></p>	<p><b>Technologically Literate</b>  <i>...proficient in navigating technology and adept at critically assessing and creating content utilizing new media forms. They leverage these media tools for persuasive communication purposes.</i></p>	<p><b>Independent Thinkers</b>  <i>...strong critical thinkers able to navigate complexity, solve problems, and make rational, creative, and ethical decisions.</i></p>
---	---	---	--	---

## Emotional

<p><b>Positive</b>  <i>...optimistic souls radiating bright energy, uplifting others with their contagious positivity and unwavering belief in possibilities. They see setbacks as stepping stones and approach life with a can-do attitude, inspiring those around them to embrace hope and resilience.</i></p>	<p><b>Empathetic</b>  <i>...compassionate hearts who listen attentively, understanding the feelings of others with genuine care and concern. They forge deep connections through empathy, offering support and kindness, making the world a more empathetic and understanding place.</i></p>	<p><b>Confident</b>  <i>...self-assured spirits who trust in their abilities, embracing challenges with poise and determination. They exude a sense of self-belief that empowers them to take bold steps, encouraging others to embrace their strengths and pursue their dreams.</i></p>	<p><b>Self-aware</b>  <i>...introspective minds who recognize their strengths, weaknesses, and emotions with honesty and humility. They continuously seek self-improvement, fostering personal growth, and inspiring others to embark on their journey of self-discovery.</i></p>	<p><b>Adaptable</b>  <i>...versatile souls who gracefully navigate change and uncertainties, embracing new situations with an open mind. Their resilience and flexibility inspire others to embrace change as an opportunity for growth, creating a harmonious balance in life's ever-changing landscape.</i></p>
--	--	--	---	---

## Social

<p><b>Collaborative</b>  <i>...team players who thrive in cooperative environments, valuing diverse perspectives and pooling their strengths to achieve shared goals.</i></p>	<p><b>Communicative</b>  <i>...effective communicators who bridge gaps, foster understanding, and encourage open dialogue for connected communities.</i></p>	<p><b>Inclusive</b>  <i>...champions of diversity, celebrating uniqueness, and fostering an accepting, harmonious society.</i></p>	<p><b>Responsible</b>  <i>...dependable individuals exemplifying integrity, accountability, and dedication, inspiring trust and reliability.</i></p>	<p><b>Global Citizens</b>  <i>...forward-thinking souls embracing a global perspective, working collaboratively for a positive, interconnected world.</i></p>
---	--	--	--	---



# The Leaders Lyceum (Learn to lead)

Welcome to The Leaders Lyceum, a place where learning comes alive and dreams take flight. We are a forward-thinking educational institution dedicated to providing a transformative learning experience for students of all ages. At our school, we believe in fostering a nurturing environment that sparks curiosity, creativity, and a passion for knowledge and entrepreneurship.

## Vision

We aim at providing a stimulating early learning and childcare experience that promotes each child's social, emotional, physical, communication and cognitive development.



## Mission

Our mission is to be a flag-bearer in equipping young learners with knowledge, skills and attitudes to become successful future leaders; supporting their journey of becoming happy independent thinkers, lifelong learners, adept professionals with entrepreneurial mindset.





## 4-H Approach

### Pioneering a New Era of Education

In the heart of Lahore, where education has long followed conventional paths, a revolutionary dawn is breaking. The Leaders Lyceum School stands as a beacon of innovation, introducing a visionary approach to education that transcends the ordinary. Our 4-H educational model, which encompasses the realms of Head, Heart, Hands, and Health, is not just a curriculum; it's a transformational journey designed to shape resilient, empathetic, and intellectually adept individuals who are fully equipped for success in our rapidly evolving world.

### Built on Professional Expertise

At the core of our innovative approach lies our dedicated faculty, each member extensively trained in the nuances of the 4-H method. This professional transformation equips our educators with the tools to guide students on a holistic journey of learning. With this approach, your child is not just learning from a textbook; they're being mentored by facilitators who understand the nuances of cultivating cognitive agility, emotional intelligence, practical skills, and holistic well-being.

### Nurturing Future Leaders

In a country where the traditional confines of education have prevailed, The Leaders Lyceum School offers an alternative that fosters the holistic growth of your child. Our pioneering approach isn't solely about academic excellence; it's about nurturing mental and physical well-being. In an era where the pressures of academics often weigh heavily on young minds, our stress-free environment stands as a sanctuary where your child can flourish without compromise.

### Building Strong Foundations

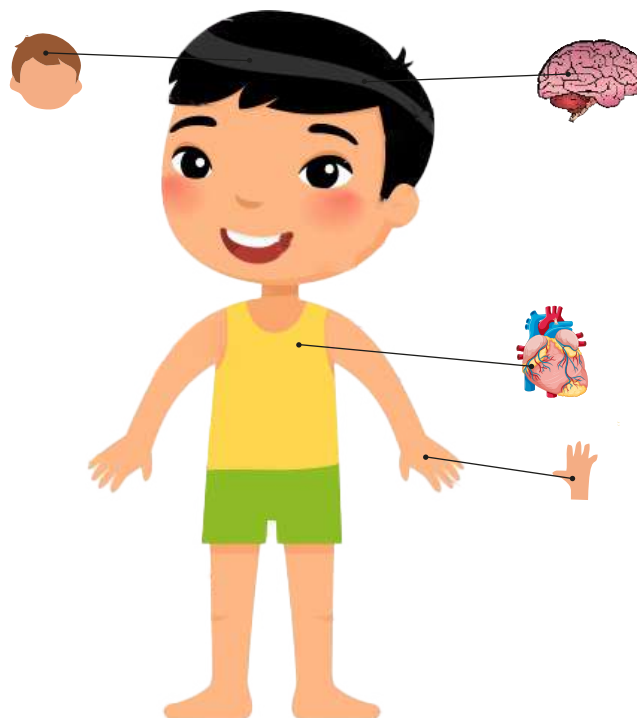
Our ultimate aspiration is to see our graduates not just succeed, but radiate joy and confidence. We firmly believe that a truly effective education goes beyond grades and test scores. The 4-H approach at The Leaders Lyceum School empowers students to tackle life's challenges with resilience and enthusiasm. With us, your child's educational journey is one that lays strong foundations for lifelong learning, innovation, and happiness.

## Where Education Meets Transformation

Are you ready to embrace a new era of education? The Leaders Lyceum School welcomes you to join our movement, to be part of a community that dares to challenge the status quo and redefine the future of learning. With us, your child won't just attend school; they'll embark on a transformative journey that shapes them into adaptable, empathetic, and accomplished individuals ready to lead in a world that demands nothing less.

### What is 4-H Approach?

The 4-H educational approach, encompassing the principles of head, heart, hands, and health, is a holistic framework designed to foster comprehensive development in children.



#### 1. Head

The "Head" component refers to cognitive development and intellectual growth. In a school setting, this aspect would involve providing diverse and stimulating learning opportunities that encourage critical thinking, problem-solving, and acquiring knowledge across various subjects. Students would be engaged in inquiry-based learning, project-based activities, and experiential education to stimulate their curiosity and analytical abilities. This could involve integrating interdisciplinary subjects, real-world applications, and technology-driven resources to enhance their cognitive capacities.

#### 2. Hands

The "Hands" component emphasizes experiential learning and practical application of knowledge. Schools implementing this element would encourage students to engage in hands-on activities, project-based learning, and community service. This approach promotes active learning and enables students to apply theoretical concepts to real-world situations. Students might engage in activities like scientific experiments, creative arts, coding projects, and community service initiatives that provide them with tangible experiences and skill development.

#### 3. Heart

The "Heart" component centers on emotional and social development. Schools employing this aspect would emphasize the cultivation of emotional intelligence, empathy, and interpersonal skills. A positive and inclusive school culture would be nurtured, where students are encouraged to express their emotions, communicate effectively, collaborate with peers, and develop a sense of belonging. Social-emotional learning programs and activities would be integrated into the curriculum, helping students build healthy relationships and self-awareness.

#### 4. Health:

The "Health" component focuses on physical and mental well-being. Schools incorporating this aspect would prioritize health education, physical activity, and mental health support. Students would participate in regular physical education classes, nutrition education, mindfulness exercises, and awareness programs related to mental health. By fostering a culture of holistic well-being, schools aim to ensure that students develop healthy lifestyle habits and coping mechanisms to navigate challenges.





## **The Imperative for an Entrepreneurial Mindset:**

In a world characterized by rapid change and constant innovation, cultivating an entrepreneurial mindset among school children has become a necessity. This mindset equips them with the tools to thrive in an evolving job market, where traditional career paths are being redefined by technology and global shifts. By fostering creativity, critical thinking, and a proactive approach, students develop the versatility and resilience needed to excel in diverse environments.

### **Early Development of the Entrepreneurial Mindset:**

At The Leaders Lyceum, we firmly believe that an entrepreneurial mindset can be nurtured from early schooling. By integrating this mindset into our educational approach, we prepare students to become future leaders, innovators, and problem solvers. Our holistic strategy includes:

**Curricular Integration:** Our curriculum infuses entrepreneurship principles across subjects, encouraging students to approach challenges with innovative solutions and critical thinking. Real-world case studies and project-based learning foster an experiential understanding of entrepreneurial concepts.

**Hands-On Exploration:** Extracurricular activities like entrepreneurship clubs, innovation workshops, and startup simulations provide students with a platform to apply theoretical knowledge and experiment with creative ideas in a supportive environment.

**Guidance from Experts:** Collaborations with seasoned entrepreneurs and industry experts expose students to real-world insights, mentorship, and practical guidance, nurturing their understanding of entrepreneurial dynamics.

### **Worldclass entrepreneurial mindset**

An entrepreneurial mindset is a dynamic way of thinking that transcends traditional boundaries, instilling individuals with a unique set of qualities that enable them to envision opportunities where others see challenges. It encompasses creativity, resilience, adaptability, risk-taking, and a proactive drive to turn ideas into impactful solutions. This mindset equips individuals with the skills to navigate uncertainty, embrace innovation, and create value in various contexts.

**Practical Experiences:** Through internships, community projects, and entrepreneurial challenges, students gain hands-on experience in problem-solving, decision-making, and teamwork, setting the stage for entrepreneurial success.

## The Global Need for Entrepreneurs

Entrepreneurs are the driving force behind innovation and economic growth. In an interconnected world facing complex challenges, entrepreneurs are uniquely positioned to create groundbreaking solutions, disrupt stagnant industries, and propel societies forward. They pioneer advancements in technology, sustainable practices, and social impact, making vital contributions to the well-being of individuals and communities worldwide.



### Ignite the Entrepreneurial Spirit

The Leaders Lyceum recognizes the imperative of an entrepreneurial mindset and is committed to shaping students into forward-thinking, adaptable, and creative individuals. By fostering this mindset from early schooling, we prepare our students to not only navigate the challenges of tomorrow but to thrive as innovators who shape the world. Join us in nurturing the next generation of entrepreneurs, visionaries, and change-makers who will drive progress and impact on a global scale.

### Continental languages 1 page

At The Leaders Lyceum School, we're all about opening doors to the world. That's why we're excited to introduce something special: the chance for our students to learn two important continental languages—Mandarin Chinese and Arabic. While Chinese language in the heart of the China Pakistan Economic Corridor (CPEC), is a strategic advantage, the study of Arabic holds immense value, especially for us as Muslims seeking to broaden our horizons and understanding our religion.

#### **Mandarin Chinese:**

China's global economic influence has surged, and learning Mandarin offers numerous advantages:

**Economic Opportunities:** China is a major player in global trade and investment. Learning Mandarin can open doors to business and job opportunities in trade, manufacturing, and services.

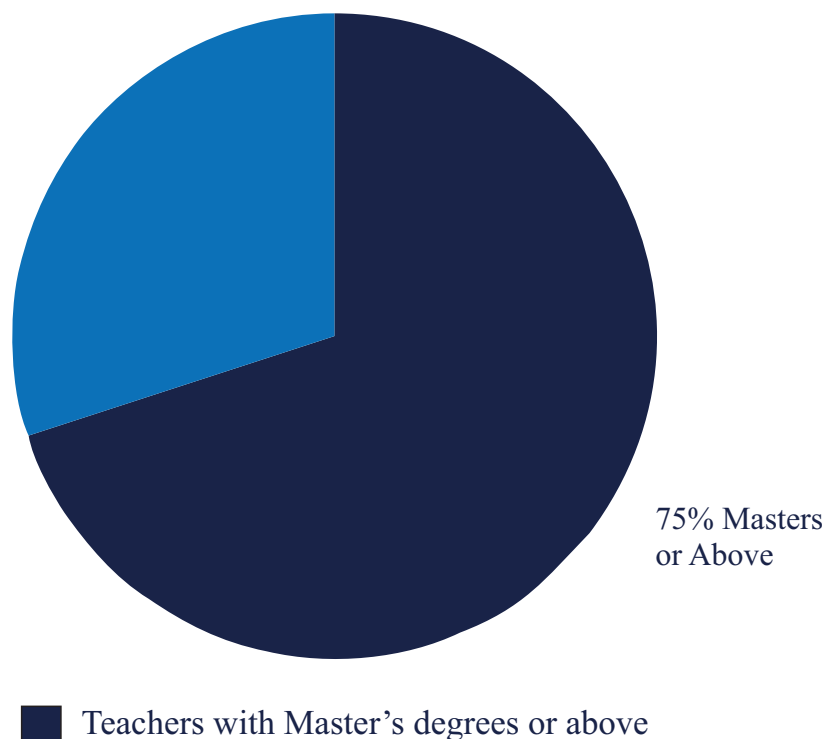
**Cultural Exchange:** Understanding Mandarin helps foster cultural ties with China, which has a rich history, art, literature, and traditions. This can lead to enhanced cooperation in various fields.

# Why Choose Us?

- Holistic learning through quality education.
- Cognitive, emotional, social, and physical development.
- State-of-the-art campus with modern facilities, spacious classrooms, well-equipped labs, and comprehensive library.
- Highly qualified and experienced faculty dedicated to nurturing students' growth and potential.
- Instilling an entrepreneurial mindset through specialized programs and activities, fostering creativity and resilience.
- Commitment to Health with health education, fitness activities, and encouragement of healthy habits.
- Technological infrastructure for remote access to resources, enabling continuous learning and collaboration.
- Optimized space with flexible layouts for collaborative workspaces and interactive learning zones.
- Turning your child into lifelong learners and successful leaders.

## Faculty

At The Leaders Lyceum School, our faculty is a team of passionate educators on a mission to ignite a flame of curiosity and a love for learning within our students. Each member is a beacon of inspiration, embodying the belief that education is the key to unlocking boundless potential.





As you enter the school premises, you will see a committed community fully engrossed in teaching-learning process. Parents stand witness to the vibrant tapestry of talent and creativity that our students unveil in regular classes, assemblies and activities.



At The Leaders Lyceum School, we embrace the spirit of inspiration, guiding each student to embrace their unique gifts and potential. Our faculty serves as guiding lights, illuminating the way forward, igniting sparks of brilliance that will shine brightly in the world.

The TLL campus facilities include:

Air-conditioned classrooms

ICT labs for all divisions

A modern library

Purpose-built science labs

State-of-the-art function hall

Multipurpose indoor sports facility

Regulation size soccer field

Outdoor elementary playground

Indoor cafeteria

Health facilities









## Elementary School

At the Elementary School level, our goal is to nurture students in Grades 15 who are well-rounded, independent, and naturally inquisitive, with a genuine passion for learning. We offer various avenues for students to explore and excel as readers, writers, mathematicians, scientists, artists, musicians, and athletes. This is where we ignite the spark of enthusiasm for learning.

Elementary students do the following:

Everyday Mathematics:	The Lucy Calkins Readers & Writers Workshop:	Full Option Science System (FOSS)	At The Leaders Lyceum TLL
 <p>Cultivates lifelong mathematical thinkers. Each grade level in the curriculum is thoughtfully crafted to enhance students' mathematical proficiency and comprehension. Through enjoyable experiences with numbers, students acquire diverse problem-solving strategies.</p>	 <p>This is an internationally acclaimed literacy program crafted by Columbia University Teachers College. Through its targeted methods, tools, and performance assessments, our students develop a passion for reading, writing, and inquiry, becoming proficient and enthusiastic learners.</p>	 <p>is an immersive, inquiry-based science program that embraces hands-on learning. Students actively participate in scientific investigations, applying the scientific method to deepen their understanding. With FOSS, our students not only grasp scientific concepts but also develop crucial engineering skills and hone their critical thinking abilities.</p>	 <p>we prioritize not only what children learn but also how they learn. We recognize the significance of building social-emotional competencies alongside academic achievements. That's why we embrace the "Responsive Classroom" approach, which is evidence-based and ensures a well-rounded and enriching educational experience for our students.</p>

## Middle School

In Middle School, our primary goal is to cultivate accountability, autonomy, and self-discovery through fitting social, emotional, and intellectual trials. Esteem is an indispensable component of our everyday existence at TLL: reverence for oneself, others, and the surroundings.

### Counseling and Well-being Services:

At The Leaders Lyceum, we prioritize the well-being of our students, offering comprehensive counseling services throughout all sections of our school. Our dedicated counselors are here to support students with any academic, personal, social, emotional, or family concerns. Rest assured, all consultations are treated with the utmost confidentiality, creating a safe and nurturing environment for every student. Our counselors are available to students throughout the year, offering their guidance and assistance during various times, including before or after school, study periods, and breaks.



Soccer Practice

Art & Craft Workshops

Chess Tournaments

Basketball Team Training

Drama Performances

Science Exploration Sessions

Music Band Rehearsals

Coding and Robotics Workshops

Yoga and Mindfulness Sessions

Environmental Conservation Initiatives

Assemblies

Field Trips

Music Performances

Pakistani Culture Day

Special Projects

Fine Arts Festival

SAISA (swimming and track and field) 5th Grade



These activities provide valuable opportunities for our young learners to excel, collaborate, and develop their unique skills and talents in a supportive and fun-filled environment.

## Secondary School

Extracurricular activities and organizations are integral to the educational experience at The Leaders Lyceum Secondary School. Students actively participate in student government, math competitions, art, drama, music, theater, and service-learning, as well as a variety of other clubs and sports.

The TLL sports program provides numerous opportunities for students to compete locally and internationally in a range of sporting events, including swimming, soccer, badminton, cricket, and basketball. Varsity sports teams for middle and high school proudly represent The Leaders Lyceum at tournaments

## Admissions at The Leaders Lyceum (TLL)

As one of Lahore's premier educational institutions, The Leaders Lyceum (TLL) offers a challenging Finland-based educational program for both local and international students. We strive for excellence in education, attracting bright minds from around the world.

## **Key Highlights of Admissions at TLL:**

An international environment that fosters diversity, with students and teachers hailing from various countries.

An interactive learning approach that emphasizes experiential education, enabling students to learn through hands-on experiences.

Smooth transition to English-medium colleges and institutions for higher education globally.

A rigorous Finlandbased curriculum that not only enhances students' college applications but also cultivates well-rounded, globally-minded individuals with a lifelong passion for learning.

Seamless transfer opportunities to other Finland or international curriculum-based schools, both locally and internationally.

## **Applying for Admissions**

Our admissions process is designed to allow students to showcase their unique qualities and achievements. Each application is given equal consideration. Accepted students are placed in appropriate classes based on assessment performance, age criteria, and official school records.

Admission seats are awarded on a first come, first serve basis. However, we do take unforeseen circumstances and delays into consideration, especially for families relocating from abroad.

We encourage prospective parents to schedule an appointment with our Admissions Department to gather the initial information required for the admissions process. While walk-ins are accommodated when possible, it is recommended to book an appointment in advance to ensure availability.

## **Admissions Testing:**

Admission testing for grades 1 to 11 includes assessments in reading, writing, mathematics, and, if applicable, English as a Second Language (ESL). The ESL testing is conducted to provide support for students whose first language is not English. For Pre-S, Pre-K, and Kindergarten, student admissions tests are conducted by early years teachers, and parents are invited to meet with the Elementary Guidance Counselor.

## **Contacting Admissions:**

**Location: 285, block 2, Sector C1, Shah Jilani Road Ghosia Chowk : Township Lahore.**

**Phone: 0300-2008563 , 042-35465144**

**Email: [admissions@tll.edu.pk](mailto:admissions@tll.edu.pk)**